

# PERSONAL NAVIGATOR



SATURDAY, APRIL 21, 2012

Sunrise: 6:50 a.m. Sunset: 7:51 p.m.

Evening Attire: Cruise Casual

All Aboard: 3:30 pm

Saturday: Partly Cloudy High: 71°F/22°C

Sunday: Partly Cloudy High: 73°F/23°C

PORT CANAVERAL, FLORIDA



Join us tonight in the beautiful Walt Disney Theatre for a magical, musical journey through the wonderland of the Disney Fantasy.

WALT DISNEY THEATRE  
DECKS 3 & 4, FORWARD  
6:15 P.M. & 8:30 P.M.

Assistance available at the entrance on Deck 3 to the Walt Disney Theatre 30 minutes prior to show time.

## Welcome Aboard!

### Your Stateroom & Luggage

Staterooms will be ready at 1:30 p.m. Stateroom hosts will deliver luggage throughout the day until 5:30 p.m.

### Staterooms with Bunk Beds

Bunk beds are recessed into the ceiling and will be prepared during evening turndown service by your Stateroom Host/ess.

### To Change Dining Assignment

Requests for different seating times will be taken today:

- 1:00 - 3:15 p.m. - Royal Court
- 3:15 - 5:00 p.m. - Please dial 7-1831/ 7-1832/ 7-1833

### Palo & Remy Dining Reservations

Are required and will be taken on a first come basis today at:


- 1:00 p.m. - 3:15 p.m. Palo & Remy
- 3:15 - 5:00 p.m. Please leave voice mail at 7-9735 for Palo or 7-9734 for Remy.

### Dinner

- 5:45 p.m. - First seating
- 8:15 p.m. - Second seating

Please check your dining tickets for details of your dining rotation, and bring them to your specific dining location. There is no need to wait in line prior to dinner. Dining Rooms open at designated seating times and your table is reserved each night of your cruise.

## SAILING AWAY



It's time to go Sailing Away! Join Mickey and Minnie, along with Tinker Bell and the rest of the gang, as they welcome you aboard the Disney Fantasy.

4:30 p.m.  
Deck Stage,  
Deck 11, Midship

## Don't Miss:

### Disney Fantasy - Talent Show Sign Ups

*Guest Services, Deck 3, Midship*

Does your family have what it takes to make their performing dreams come true? Find out at the Disney Fantasy Family Talent Show - dare to show your family's flair! Pre-register at the Guest Services Desk, Deck 3 Midship. Your last chance to sign up is at 4:00 p.m. on Thursday.

### Walking Ship Tour

*1:00 & 2:00 p.m., Preludes, Deck 3, Forward*

Join your Cruise Staff as they give you tips and help you navigate the Disney Fantasy's entertainment venues.

### Mirror, Mirror Game show

*7:30 & 9:45 p.m., D Lounge, Deck 4, Midship*

Join the Magic Mirror and Dopey in the fairest game show of them all, Mirror, Mirror. There's trivia, singing and even a relay race. Hi Ho, Hi Ho, its off to play we go!

### Match Your Mate

*10:30 p.m., The Tube (18+), Deck 4, Aft*

It's time to play everyone's favorite couple's game show - Match your Mate!

## Shutters

Visit Shutters for all your photographic needs, from Digital cameras, batteries, binoculars and accessories. All photos taken during this cruise will be available for viewing on our photo kiosks at Shutters Digital, as well as in your photo folder at Shutters, Deck 4, Midship.

## DINNER MENU

Animator's Palate: Pacific Rim Cuisine  
Enchanted Garden: Continental Market  
Royal Court: French Dinner

## DRINK OF THE DAY

Paradise (Alcoholic)  
Espresso Chiller (Non Alcoholic)

## IMPORTANT NUMBERS

Fire/Security: 7-3001  
Medical Emergency: 7-3000  
Health Center: 7-1923

# FAMILY ACTIVITY HIGHLIGHTS

## MIRROR, MIRROR GAME SHOW

*D Lounge, Deck 4, Midship - 7:30 & 9:45 p.m.*

Join the Magic Mirror and Dopey in the fairest game show of them all, Mirror, Mirror. There's trivia, singing and even a relay race. Hi Ho, Hi Ho, its off to play we go!

## FAMILY SUPERSTAR KARAOKE

*D Lounge, Deck 4, Midship - 10:30 p.m.*

Join your Cruise Staff in D Lounge tonight and sing along to your favorite song - fun for everyone.

## Cruise Highlights

Friday

PORT CANAVERAL  
*All Aboard: 3:30 p.m.*  
*Attire: Cruise Casual*

A FANTASY COME TRUE  
*Walt Disney Theatre*  
6:15 & 8:30 p.m.

Saturday

DAY AT SEA  
*Attire: Formal*

DISNEY'S ALADDIN  
*Walt Disney Theatre*  
6:15 & 8:30 p.m.

Sunday

DAY AT SEA  
*Attire: Cruise Casual*

DISNEY WISHES  
*Walt Disney Theatre*  
6:15 & 8:30 p.m.

Monday

ST. MAARTEN  
*All Ashore: Approx. 8:00 a.m.*  
*All Aboard: 6:30 p.m.*  
*Attire: Pirate/Cruise Casual*

DisneyNature: Chimpanzee  
*Walt Disney Theatre*  
6:00 & 8:45 p.m.

Tuesday

ST. THOMAS  
*All Ashore: Approx. 7:45 a.m.*  
*All Aboard: 4:00 p.m.*  
*Attire: Cruise Casual*

KEVIN JOHNSON  
*Walt Disney Theatre*  
6:15 & 8:30 p.m.

Wednesday

DAY AT SEA  
*Attire: Semi-Formal*

DISNEY'S BELIEVE  
*Walt Disney Theatre*  
6:15 & 8:30 p.m.

Thursday

DISNEY'S CASTAWAY CAY  
*All Ashore: Approx. 9:45 a.m.*  
*All Aboard: 4:30 p.m.*  
*Attire: Cruise Casual*

AN UNFORGETTABLE JOURNEY  
*Walt Disney Theatre*  
6:15 & 8:30 p.m.



# ADULT ACTIVITY HIGHLIGHTS



## FITNESS CLASSES

*Senses Spa and Salon has a variety of seminars and fitness classes available throughout the cruise.*

## BEVERAGE SEMINARS

*Your Beverage team has a host of tastings and seminars to entertain and educate you. Stop by Guest Services, Deck 3, Midship to pre-book these experiences (nominal fee applies).*

Wine Tasting - Martini Tasting - Champagne Tasting  
Tequila/Margarita Tasting and Mixology

## LIVE MUSIC WITH FINE WHINES

*La Piazza, Deck 4, Aft - 7:30, 9:45 & 10:45 p.m.*

Join our Jazz Duo, Fine Whines, as they play live in La Piazza for your listening pleasure.



## CLUB 18\*21 ICE BREAKERS

*O'Gills Pub, Deck 4, Aft - 10:00 p.m.*

Club 18\*21 is an exclusive gathering for young adult guests. Come meet fellow cruisers and learn about the great activities the Disney Fantasy has to offer to help create the perfect cruise experience.



## MATCH YOUR MATE

*The Tube, Deck 4, Aft - 10:30 p.m.*

It's time to play everyone's favorite couple's game show - Match your Mate!

## FEATURED CABARET ACTS THIS VOYAGE



### THE PHYSICAL COMEDY OF MICHAEL HOLLY

Michael Holly began his performing days on the cobbled streets of Fantasyland at Disneyland in 1985 and since then has been the comedy star of a dozen Las Vegas Shows including Vegas-The Show at Planet Hollywood, V-The Ultimate Variety Show at the Venetian, Les Folies Bergere at The Tropicana and has the highest rated one man comedy variety show in Las Vegas, his own, "Michael Holly's Off The Wall Comedy Hour".



### MUSIC AND COMEDY OF LLOYD MABREY

Lloyd Mabrey has been performing since 1976 as a professional entertainer and has become one of our country's most respected performers. He has opened for more than 150 major acts from Buck Owens to the Beach Boys. His versatile singing style and 12 string guitar skills are complemented by his warm wit and his incredible improvisational skills - he is truly a one of a kind entertainer!



### COMEDY & MAGIC OF DAVID WILLIAMSON

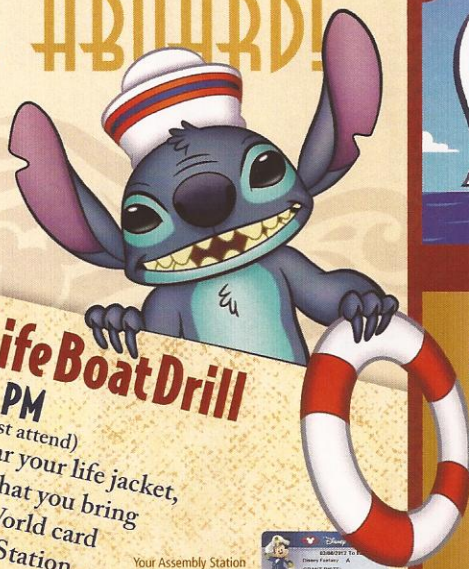
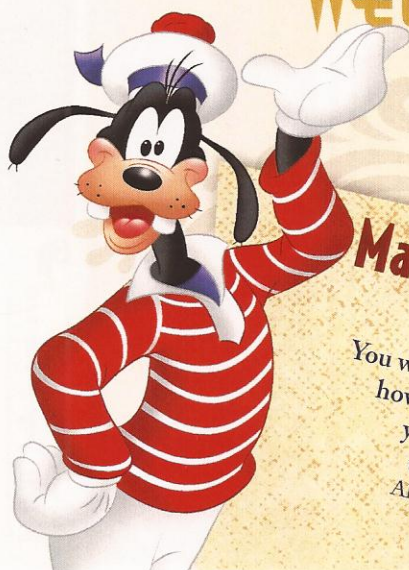
David is an international award-winning magician. He is the first ever recipient of the prestigious International Brotherhood of Magicians Gold Cup Award of Excellence in close-up magic. David was voted Sleight of Hand Magician of the Year two years in a row by his peers at Hollywood's renowned Magic Castle. He was also twice awarded the Magic Castle Lecturer of the Year and the Magic Castle Parlor Magician of the Year. David was voted Most Wanted Magician at the 2003 European FISM Magic Convention.



### COMEDY AND VENTRILOQUISM OF KEVIN JOHNSON

Kevin has been a ventriloquist nearly all his life. It all started when he was 9 years old, after his parents gave him his first pull-string dummy for Christmas. Having no formal training, he taught himself the art of ventriloquism over a 4 year period. He developed his technique from a parrot. Kevin was intrigued that parrots could speak so clearly without the use of lips. So he re-learned how to speak all together with the use of his tongue and his throat. Is it any wonder that his two closest friends, Clyde and Matilda are birds?

# WELCOME ABOARD!



## Mandatory Life Boat Drill

**4:00 PM**  
 (All Guests must attend)  
 You will not need to wear your life jacket,  
 however it is critical that you bring  
 your Key To The World card  
 to your Assembly Station.  
 All ship services will be suspended  
 between 3:45 and 4:30.

Your Assembly Station is indicated on your Key To The World card.

It's time to go Sailing Away! Join Mickey and Minnie along with Tinker Bell and the rest of the gang as they welcome you aboard the Disney Fantasy.

**4:30 p.m.,  
 Deck Stage,  
 Deck 11, Midship**

Fold along the dotted lines and take me with you so you don't miss any of the fun!

	1:45	2:00	2:15	2:30	2:45	3:00	3:15	3:30	3:45	4:00	4:15	4:30	4:45	5:00	6:15	5:30	5:45	6:00	6:15	6:30	6:45			
FUNNELVISION													Tinker Bell (G) FunnelVision											
MOVIES													Tangled (PG) <b>DOLBY 3D</b> Buena Vista Theatre >7:25 p.m.											
CHARACTER													Sailing Away Deck Stage	Goofy Lobby Atrium	Cinderella Dk 4, Midship	Mickey Lobby Atrium								
FUN FOR ALL AGES	Ship Tour (Earlier tour also at 1:30 p.m.) Preludes (Walt Disney Mural, Dk 3)																		Live Music with "The Dreamers" Lobby Atrium					
	Poolside Jams with DJ Brandon Deck Stage																		Fantasy Club Walt Disney Theatre					
ADULTS							Spa Raffle Senses Spa & Salon																	
ADULTS	Closest to the Pin Golf Simulator																							
Vibe	Open House																		Open House					
Edge	Open House																		Open House					
Oceaneer Lab	Open House & Registration																		Open House & Registration					
Oceaneer Club	Open House & Registration																		Open House & Registration					

Symbol for activities that will be repeated during the cruise

## INAUGURAL Sailings 2012-2013

	7:00	7:15	7:30	7:45	8:00	8:15	8:30	8:45	9:00	9:15	9:30	9:45	10:00	10:15	10:30	10:45	11:00	11:15	11:30	11:45	12:00			
FUNNELVISION													Toy Story (G) FunnelVision						Remember the Titans (PG) FunnelVision					
MOVIES													Tangled (PG) <b>DOLBY 3D</b> Buena Vista Theatre						Disney Nature: African Cats (PG) Buena Vista Theatre					
CHARACTER	Snow White Dk 4, Midship	Goofy Lobby Atrium	Cinderella Dk 4, Midship	Mickey Lobby Atrium	Ariel Dk 4, Midship							Aurora Dk 4, Midship	Tiana Dk 4, Midship											
FUN FOR ALL AGES	Live Piano Lobby Atrium		Disney's Mirror Mirror D Lounge		Fantasy Club Walt Disney Theatre						Disney's Mirror Mirror D Lounge		Family Superstar Karaoke D Lounge											
ADULTS			Live Music with "The Dreamers" Lobby Atrium								"The Dreamers" LIVE Lobby Atrium		Club 18*21 Ice Breakers O'Gills Pub		Match Your Mate The Tube		Bring The Tube Alive With Guest DJ Alex Metallic The Tube							
ADULTS			Live Music with Fine Whines La Piazza								Live Music with Fine Whines La Piazza		Live Music with Fine Whines La Piazza											
Vibe	Hangin' in Vibe												The Download											
Edge	Chillin' in Edge												Taking it to the Edge											
Oceaneer Lab	Open for Secured Youth Activities						Choose Your Cruise						Open for Secured Youth Activities											
Oceaneer Club	Open House & Registration						Choose Your Cruise						Aloha Luau											

FOLD

IN THE SPOTLIGHT SERIES

SOLVE IT! SERIES

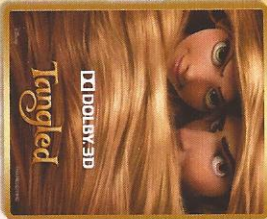
JUMP UP! SERIES

CREATE & INVENT SERIES

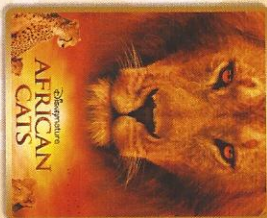
CLUBHOUSE SERIES

STORYBOOK SERIES

# BUENA VISTA THEATRE



5:45 & 8:00 pm  
Run Time: 1 hr 40 mins  
Rating: PG



10:15 p.m.  
Run Time: 1 hr 29 mins  
Rating: PG

## Character Appearances

- GOOFOY**  
Lobby Atrium - 5:15 p.m.  
Lobby Atrium - 7:30 p.m.
- CINDERELLA**  
Deck 4, Midship, Balcony - 5:30 p.m.  
Deck 4, Midship, Balcony - 7:45 p.m.
- MICKEY MOUSE**  
Lobby Atrium - 5:45 p.m.  
Lobby Atrium - 8:00 p.m.  
Lobby Atrium - 10:00 p.m.
- PLUTO**  
Lobby Atrium - 7:00 p.m.
- SNOW WHITE**  
Deck 4, Midship, Balcony - 7:15 p.m.
- PRINCESS TIANA**  
Preludes - 8:00 p.m.  
Deck 4, Midship, Balcony - 10:00 p.m.
- ARIEL**  
Deck 4, Midship, Balcony - 8:15 p.m.
- CHIP & DALE**  
Preludes - 9:30 p.m.
- MINNIE MOUSE**  
Lobby Atrium - 9:30 p.m.
- AURORA**  
Deck 4, Midship, Balcony - 9:30 p.m.



For details of daily Disney character appearances, refer to the character line on the Navigator Grid, or the digital character board in the Lobby Atrium.

DF/BD7W/0034.21.12/RD/©DISNEY

## YOUTH ACTIVITIES THEMED EXPERIENCES

- CLUBHOUSE SERIES**  
focuses on movement and features content which appeals to younger children.
- JUMP UP! SERIES**  
includes large ground games & movement-oriented activities.
- CREATE & INVENT SERIES**  
will have a tactile focus allowing children to create and admire their work.
- IN THE SPOTLIGHT SERIES**  
focuses on children's stage presence with lots of activities and enthusiasm.
- SOLVE IT! SERIES**  
are less active, but will challenge children with problem/solutions-based activities.

### SHIP DIRECTORY

YOUTH ACTIVITIES	RECREATION
DISNEY'S OCEANEER CLUB	Deck 5, MID
DISNEY'S OCEANEER LAB	Deck 5, MID
EDGE	Deck 13, MID
IT'S A SMALL WORLD NURSERY	Deck 5, MID
VIBE ENTRANCE	Deck 4, FWD

### RECREATION

AQUADUCK	Deck 12, MID	12:00 P.M. - 3:00 P.M.
AQUALAB	Deck 12, AFT	4:30 P.M. - 10:00 P.M.
DONALD'S POOL	Deck 11, MID	12:00 P.M. - 7:00 P.M.
		12:00 P.M. - 3:30 P.M.
		5:30 P.M. - 11:00 P.M.
GOLF/ SPORTS SIMULATORS	Deck 13, AFT	12:00 P.M. - 3:30 P.M.
		4:30 P.M. - 6:00 P.M.
GOOFOY GOLF	Deck 13, AFT	12:00 P.M. - 10:00 P.M.
GOOFOY'S SPORTS DECK	Deck 12, AFT	12:00 P.M. - 6:00 P.M.
MICKY'S POOL	Deck 11, MID	12:00 P.M. - 11:00 P.M.
MICKY'S SLIDE	Deck 11, MID	12:30 P.M. - 3:30 P.M.
		4:30 P.M. - 6:00 P.M.
MIDSHIP DETECTIVE AGENCY	Decks 2 & 5, MID	11:30 A.M. - 9:00 P.M.
NEMO'S REEF	Deck 11, MID	12:00 P.M. - 3:30 P.M.
		4:30 P.M. - 7:00 P.M.
PORT ADVENTURES DECK	Deck 5, MID	12:00 P.M. - 3:30 P.M.
		4:30 P.M. - 8:30 P.M.
QUIET COVE POOL	Deck 11, FWD	12:00 P.M. - 3:00 P.M.
		4:30 P.M. - 10:00 P.M.
SENSSES FITNESS CENTER	Deck 11, FWD	11:30 A.M. - 10:00 P.M.

### GENERAL INFORMATION

ARR-CADE	Deck 11, AFT	24 HOURS
DISNEY VACATION CLUB	Deck 4, MID	5:00 P.M. - 10:00 P.M.
FUTURE CRUISE SALES DESK	Deck 4, MID	
GUEST SERVICES	Deck 3, MID	24 HOURS
MEDICAL HEALTH CENTER	Deck 1, FWD	4:30 P.M. - 7:00 P.M.
PORT & SHOPPING DESK	Deck 4, MID	7:30 P.M. - 8:30 P.M.
Preludes	Deck 3, FWD	5:45 P.M. - 6:30 P.M.
		8:00 P.M. - 8:45 P.M.
SENSSES SPA AND SALON	Deck 11, FWD	11:30 A.M. - 10:00 P.M.
SHUTTERS PHOTO GALLERY	Deck 4 MID	5:00 P.M. - 11:00 P.M.
SHUTTERS DIGITAL	Deck 4 MID	OPENS AT 5:00 P.M.

### SHIPPING

BIBBIDI BOBABIDI BOUTIQUE	Deck 5, MID	Business 11:30 A.M. - 3:00 P.M.
		Travel/Reservations 5:30 P.M. - 9:00 P.M.

MICKY'S MAINSAIL	Deck 3, FWD	5:45 P.M. - 11:00 P.M.
SEA TREASURES	Deck 3, FWD	5:45 P.M. - 11:00 P.M.
VISTA GALLERY	Deck 4, MID	6:00 P.M. - 10:00 P.M.
WHITECAPS	Deck 3, FWD	5:45 P.M. - 11:00 P.M.

**DINNER MENU**  
Amirator's Palace Pacific Rim Cuisine  
Enchanted Garden Continental Milder  
Royal Court French Dinner  
Dining Times: 5:45pm & 8:15pm

**DRINK OF THE DAY**  
(Alcoholic)  
Espresso Chiller  
(Non-Alcoholic)

**WEATHER FORECAST**  
Saturday: Party Cloudy  
High: 71 F/22 C  
Sunday: Party Cloudy  
High: 73 F/23 C

### DINING & LOUNGES

LOUNGE	DINNER	
CABANAS	Deck 11, AFT	12:00 P.M. - 3:15 P.M.
ENCHANTED GARDEN	Deck 2, MID	12:00 P.M. - 2:00 P.M.
FILMORE'S FAVORITES	Deck 11, MID	12:00 P.M. - 3:30 P.M.
		4:15 P.M. - 7:00 P.M.
Luigi's PIZZA	Deck 11, MID	12:00 P.M. - 3:30 P.M.
		4:15 P.M. - 6:00 P.M.
TOW MATER'S GRILL	Deck 11, MID	12:00 P.M. - 3:30 P.M.
		4:15 P.M. - 10:00 P.M.

### ADDED FEATURES

LA PIAZZA (18+)	Deck 4, AFT	10:45 P.M. - 11:45 P.M.
LUIGI'S PIZZA	Deck 11, MID	9:30 P.M. - 12:00 MID.

### ENTERTAINMENT - (UNIQUE) - 24HR

Adults must be 21 and older to consume alcoholic beverages.

BON VOYAGE	Deck 3, MID	12:00 P.M. - 11:00 P.M.
COVE BAR (18+)	Deck 11, FWD	12:00 P.M. - 6:30 P.M.
COVE CAFE (18+)	Deck 11, FWD	11:30 A.M. - 12:00 MID.
CURRENTS (18+)	Deck 13, FWD	12:00 P.M. - 10:30 P.M.
D LOUNGE	Deck 4 MID	Show Times
FROZONE TREATS	Deck 11, MID	12:00 P.M. - 11:00 P.M.
LA PAZZA	Deck 4, AFT	12:00 P.M. - 12:00 MID.
MEPURIAN (18+)	Deck 12, AFT	5:00 P.M. - 12:00 MID.
O'GILLIS PUB	Deck 4, AFT	12:00 P.M. - 12:30 A.M.
O'OH LA LA (18+)	Deck 4, AFT	5:00 P.M. - 12:30 A.M.
OUTLOOK	Deck 14, MID	
SKYLINE (18+)	Deck 4, AFT	5:00 P.M. - 12:30 A.M.
THE TUBE (18+)	Deck 4, AFT	10:00 P.M. - 2:00 A.M.
VISTA CAFE	Deck 4 MID	12:00 P.M. - 10:00 P.M.
WAVES	Deck 12, AFT	12:00 P.M. - 7:00 P.M.

Consumers who order raw or partially cooked, ready-to-eat food of animal origin, are hereby informed that the food is not sufficiently cooked to ensure its safety.

**GOOFOY'S SPORTS**  
Digital Simulators

**Sports Simulator**  
Basketball, Baseball, Hockey, or Soccer) \$25 / half hr, \$45 / hr  
\$12 / half hr, \$20 / hr

**Golf Simulator**  
Reservations can be made at the Port Adventures Decks  
Deck 3, Midship or at the Simulators, Deck 13, Aft



Visit the Port Adventures Desk, Deck 5, Midship, for bookings & questions.

**IMPORTANT NUMBERS**  
Fire/Security: 7-3001  
Medical Emergency: 7-3000  
Health Center: 7-1923

# YOUTH ACTIVITIES HIGHLIGHTS



Deck 5 Midship (7-5864) 12:00 p.m. - 11:00 p.m.  
 Infants and Toddlers can enjoy toys and activities at It's A Small World Nursery. Reservations are first come, first served so please stop by!



Deck 5 Midship (7-1440)  
 12:00 p.m. - 12:00 Mid.



Deck 5 Midship (7-1445)  
 12:00 p.m. - 12:00 Mid.

## REGISTRATION FOR 3-12 YEAR OLDS

Meet the Youth Activities Team in the Oceaneer Lab and Oceaneer Club, complete your registration & learn all about the Themed Experiences this cruise!

**CLUBHOUSE SERIES** - The Clubhouse Themed Experiences focus on movement and feature content which appeals to younger children. *Recommended 7 yrs & younger.*

**STORYBOOK SERIES** - The Storybook Series Themed Experiences are designed with a strong connection to the Disney classic stories.

**JUMP UP! SERIES** - The Let's Move! Themed Experiences will include large ground games & movement-oriented activities.

**CREATE & INVENT SERIES** - The Create & Invent Themed Experiences will have a tactile focus allowing children to create and admire their work.

**IN THE SPOTLIGHT SERIES** - The In The Spotlight Themed Experiences focus on children's stage presence with lots of activities and enthusiasm. *Recommended 7 yrs & older.*

**SOLVE IT! SERIES** - The Solve It! Themed Experiences are less active, but will challenge children with problem/solutions-based activities. *Recommended 7 yrs & older.*

**OUT AND ABOUT SERIES** - Set outside secured Youth Activities spaces, very active, appealing to Tweens. Recommended 8 - 14 years

### DINE & PLAY

A convenience for families dining at 8:15 p.m., our Youth Activities Counselors will be available at 9:15 p.m. at the entrance of Royal Court, Enchanted Garden and Animator's Palate dining rooms to bring registered children to join the fun in the Youth Activity areas.

### YOUTH ACTIVITIES OPEN HOUSE

Open House is an opportunity for all to come and participate in a variety of exciting activities and free time in the Oceaneer Club, Lab, Edge and Vibe throughout the cruise. During these times secured programming will still be offered in the other venue for those looking to check their children into care.

Deck 13 Midship (41-14426) - 12:00 p.m. - 12:00 a.m.

### EDGE (11- 14 YEAR OLDS)

Edge is an interactive play space play video games, watch television and participate in arts and crafts with kids their own age.

### TAKING IT TO THE EDGE

10:00 p.m. Edge

Come and meet your counselors and fellow tweens as we get to know each other and what there is for you to do all week long in Edge.



Entrance on Deck 4 Forward (7- 9418)  
 12:00 p.m. - 1:00 a.m.

### THE DOWNLOAD (14-17 YEAR OLDS)

10:30 p.m. Vibe

Come up to Vibe and help plan all the fun activities you will be doing this cruise with your new friends! We'll use our very own Teens-only intranet database to decide how our week will go!

# BUENA VISTA THEATRE

## Feature Movies this Voyage

### SATURDAY - PORT CANAVERAL

5:45 p.m.	PG	Tangled	DOLBY 3D
8:00 p.m.	PG	Tangled	DOLBY 3D
10:15 p.m.	PG	Disneynature: African Cats	

### SUNDAY - DAY AT SEA

8:30 a.m.	PG	Disneynature: African Cats	
10:30 a.m.	PG	The Muppets	
3:00 p.m.	PG-13	John Carter	DOLBY 3D
5:45 p.m.	PG	Disneynature: African Cats	
8:15 p.m.	PG	Disneynature: African Cats	
10:15 p.m.	PG-13	War Horse	

### MONDAY - DAY AT SEA

10:00 p.m.	PG	Tangled	DOLBY 3D
2:15 p.m.	PG-13	War Horse	
5:15 p.m.	PG-13	Real Steel	
8:00 p.m.	PG-13	Real Steel	
10:30 p.m.	PG-13	John Carter	DOLBY 3D

### TUESDAY - ST. MAARTEN

12:00 p.m.	G	Toy Story 3	DOLBY 3D
2:30 p.m.	PG-13	The Help	
5:30 p.m.	G	Cars 2	DOLBY 3D
8:00 p.m.	G	Cars 2	DOLBY 3D
11:00 p.m.	PG-13	Pirates of the Caribbean 4	DOLBY 3D

### WEDNESDAY - ST. THOMAS

10:30 a.m.	G	Cars 2	DOLBY 3D
1:00 p.m.	PG-13	Real Steel	
3:30 p.m.	PG	Disneynature: Chimpanzee	
5:45 p.m.	PG	The Muppets	
8:15 p.m.	PG	The Muppets	
10:30 p.m.	PG-13	The Help	

### THURSDAY - DAY AT SEA

8:30 a.m.	G	Toy Story 3	DOLBY 3D
10:45 a.m.	PG	Disneynature: Chimpanzee	
5:15 p.m.	PG-13	John Carter	DOLBY 3D
8:00 p.m.	PG-13	John Carter	DOLBY 3D
10:45 p.m.	PG	The Muppets	

### FRIDAY - DISNEY'S CASTAWAY CAY

8:30 a.m.	PG	Disneynature: Chimpanzee	
1:00 p.m.	PG	Tangled	DOLBY 3D
3:00 p.m.	PG	Disneynature: Chimpanzee	
5:00 p.m.	PG-13	War Horse	
8:00 p.m.	PG-13	War Horse	
11:00 p.m.	PG	Disneynature: Chimpanzee	

Subject to change.

# MORE TO ENJOY WHILE ONBOARD

## ONBOARD AIRLINE CHECK IN

If you would like to have your boarding passes printed for you onboard and have your luggage taken to the airport for you, register before Wednesday. If you have Disney Cruise Line airport transfer to Orlando International Airport and fly with one of the participating airlines. Please stop at Guest Services, Deck 3, Midship.

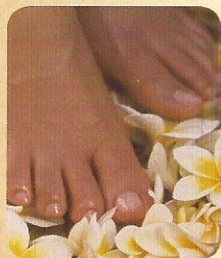


## DISNEY VACATION CLUB®

Want to learn more about taking magical vacations year after year? Please see a Disney Vacation Club representative on Deck 4, Midship, or call 7-2805 from your stateroom phone for more information about our group presentations.

## PORT & SHOPPING INFORMATION

Meet your Shopping Guides, Johan & Marissa at the Port & Shopping Desk, Deck 4, Midship 7:30 p.m. - 8:30 p.m. Don't miss tomorrow's Port & Shopping Show in the Buena Vista Theatre at 1:30 p.m. Stop by to pick up extra raffle tickets to win a Diamond Pendant at the Shopping Show.



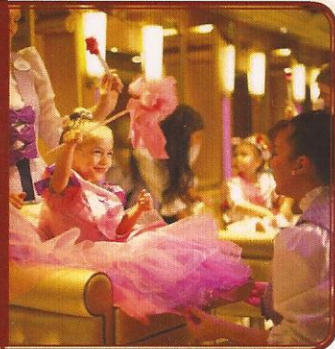
## SENSES FIRE & ICE MANICURE

SPA & SALON

Fire & Ice manicure/pedicure is a combination of hot stone massage with cooling potions, combined with skin smoothing exfoliations. Your hands and feet will feel like luxury! 50 minute manicure \$50 and 60 minute pedicure \$70  
Call Senses Spa & Salon, 7-1465

## BIBBIDI BOBBIDI BOUTIQUE

Becoming the princess of your dreams creates memories for a lifetime. Where Fairy Godmothers in training are ready with Pixie Dust and Magic! Make your reservations for princess makeovers and the Pirate League today. Limited space available. Bibbidi Bobbidi Boutique is located on Deck 5, Midship or call ext. 9438 to make a reservation.



## Shutters

## GET THE PICTURE!

Amazing offer! Order all your stateroom photos on a CD for only \$349.95 and for \$50 more you can take home the printed copy as well! All your stateroom photos in digital as well as printed format for only \$399.95! Your photos will be ready for viewing in Shutters Digital, Deck 4, Midship this evening. Visit Shutters, Deck 4, Midship, to learn more. Conditions apply.

\*Please note that photos are available for viewing on our interactive photo kiosks approximately five hours after being taken and are only available for purchase during this cruise.

## SURF @ SEA

\$0.75 per minute, or save money by buying blocks of time. \$55.00 for 100 minutes, \$100.00 for 250 minutes and \$150.00 for 500 minutes. Wireless information sheets are available at Guest Services, Deck 3, Midship. Please note: Due to satellite connectivity, onboard internet service will be noticeably slower than you may be accustomed to and may at times be interrupted or unavailable.

## ON DEMAND TV

Watch Disney movies, Hollywood features, ABC Shows, and even captioned content, plus much more "On Demand" for FREE in the comfort of your stateroom! Bookmark your movie and come back to watch it later. Press MENU on your stateroom television remote control, and follow the prompts.

## Disney CRUISE LINE. PORT ADVENTURES

Port Adventures are designed to ensure that you see the best that our ports have to offer. Explore the two nations of St. Maarten on a land tour or take an exhilarating RIB boat ride from the Dutch to the French side. From St. Thomas you can enjoy the scenic splendor of St. John or snorkel in the beautiful waters of the U.S.V.I. Our experienced Port Adventures team will help you find the best choices for your family at the Port Adventures Desk, Deck 5, Midship.

## SHOPPING

### GET YOUR CRUISE STARTED

Autograph books, pens, lanyards, sunglasses and much much more available in Mickey's Mainsail, Deck 3, Forward.

### SOPHIA FIORI

Check out the 3 million dollar trunk show and meet the Director of the sales, "Diamond Jeff" from Sofia Fiori. Sofia Fiori is a designer to the stars hosting many red carpet events. Ask about their signature ring, the Venus and Victoria Ring with color changing bands. Don't miss the unveiling of the million dollar necklace. Meet "Diamond Jeff" from 6:00 p.m. to 11:00 p.m. in Whitecaps, Deck 3, Forward.

### CHOPARD

Swiss luxury watches and jewelry, designed for artisans showcasing unparalleled glamour and craftsmanship. Where originality, creativity, and technical mastery are pushed to their ultimate limits. In addition to Chopard's collection, we offer the Happy Mickey line, exclusively designed for Disney.

### FANTASY INAUGURAL

Bring home a memory of the Fantasy's Inaugural sailings. Limited time only. Choose from tees, hats, sweatshirts, mugs and scrapbooks. Available in Sea Treasures, Deck 3, Forward.

### DUTY FREE SHOPPING!

Whitecaps has it all from fragrance to liquor for all tastes and desires. Tax and duty free the best way to shop.

### VISTA GALLERY

Check out our amazing collection of Original Art exclusively created for the Disney Fantasy. This is your chance to own a piece of Disney Cruise Line History.

Due to port regulations, when the ship is docked, the stores will remain closed.

## IMPORTANT INFORMATION

### Security Notice

All Guests (including children) who wish to disembark the ship are required to present their Key to the World card at the gangway. A photo ID is also required for those Guests who are 18 years of age or older. Guests under the age of 18 are required to have a Parent, Guardian or other responsible adult sign an authorization form at the time it is given out if they wish to go ashore unaccompanied. Authorization forms are available at the gangways and Guest Services.

### Please Note:

Please remember to use plenty of sunscreen and mosquito repellent when venturing ashore.

### Cold and Flu Reminder

Please wash hands frequently and thoroughly, particularly before meals. Contact the Health Center by dialing 7-1923, should anyone in your party become ill.

### Corridor Quiet Hours

As a courtesy to all our Guests, please recognize quiet hallway hours from 10:00 p.m. til 8:00 a.m.

### Inclement Weather

For the safety of all Guests, outdoor events may be changed due to unforeseen weather conditions.

### Environmental Message

With Disney's commitment to the Environment, please refrain from throwing anything over the Ship's side. Thank you!

### No Reserved Seats Policy

As a courtesy to all our Guests, we kindly advise that the saving of seats is not permitted in the Walt Disney Theatre, and the saving of the sun loungers is not permitted on Deck 11, 12, and 13. Items left unattended will be returned to lost and found at Guest Services, Deck 3 Midship.

### Smoking

For the comfort of our guests the following areas are designated as Smoking areas: - Promenade Deck (Deck 4), smoking is permitted Port Side, Aft only from 6:00 p.m. to 6:00 a.m.  
- Currents - Deck 13, Forward, Port Side.  
- Meridian Bar - Deck 12, Aft, Port Side, outside.  
- Smoking is permitted on stateroom verandahs. Smoking is prohibited inside all guest staterooms. Guests found smoking in their staterooms will be charged a \$250 stateroom recovery fee.

### Walt Disney Theatre

Theatrical performances may use artificial fog, strobe lights, pyrotechnics and other special effects. For the safety of our performers and the comfort of those around you, the use of any photography, video recording device or any electronic equipment is prohibited.

### Verandah Safety

Please do not leave any combustible materials on your balcony when not present in your stateroom for safety reasons.  
DF/BD/7E/003/4.21.12/RD/©DISNEY